

# Beavertail Trailers



Closely related to the flatbed range, and with the addition of a sloping rear bed section, these trailers offer the flexibility of a flatbed with the added benefit of a low loading height to the rear of the trailer.

As with all our flatbed trailers, the beavertail range can be fitted with one of our winch options, allowing the recovery and loading of broken down or unpowered vehicles. The maximum gross weight for the lighter LT models is 2000kg, whilst the heavier LM models offer the maximum gross weight of 3500kg.

The beavertail range can be ordered with a full width rear ramp which is assisted with spring supported from rear corner posts. A gas strut assisted ramp is also available which has no corner posts making it particularly suitable for ground care applications and the loading of wide mowers.

Many of the accessories available on the flatbed range can also be added to further enhance the beavertail range.

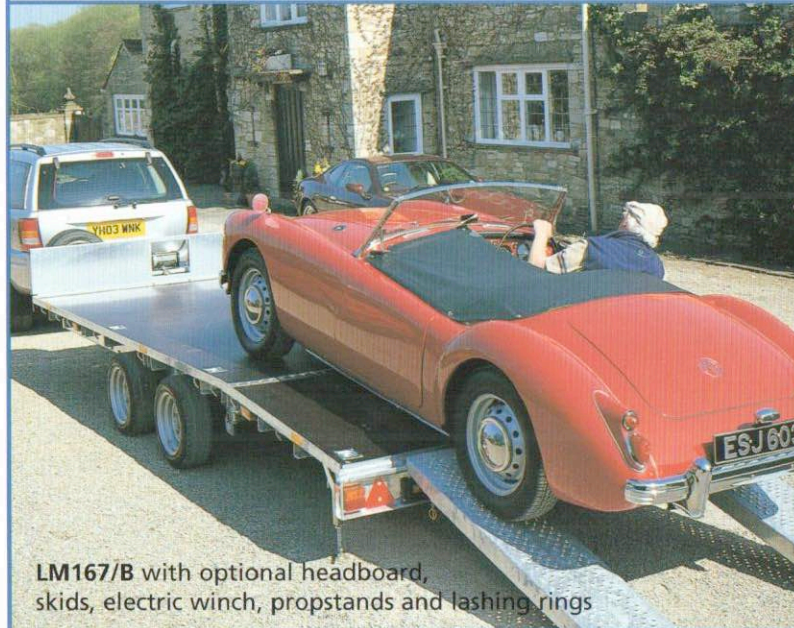
Vehicles with low ground clearance may not be suitable for loading on this type of trailer.



LM166/B with optional propstands

# Beavertail

SIZE COMBINATIONS			
Platform Width	Platform Length		Loading Height
	4240mm/13'9"	4840mm/15'10"	
1980mm/6'5"	LT/LM146/B	LT/LM166/B	575mm/1'11"
2250mm/7'4"	LM147/B	LM167/B	575mm/1'11"



LM167/B with optional headboard, skids, electric winch, propstands and lashing rings



LM146/B with optional headboard, propstands and lashing straps